

Budgeting for SDGs: A Data-driven Approach

Daniele Guariso^{1,4}, Omar A. Guerrero^{2,4} and Gonzalo Castañeda³
 University of Sussex¹, UCL², CIDE³ and The Alan Turing Institute⁴



Main Takeaways

- Data-driven framework to identify those expenditure categories that matter the most to improve the Sustainable Development Goals (SDGs) indicators.
- The framework can help treasuries around the world in incorporating the SDGs into their budget planning and thinking about potential spillovers of government programmes.
- Importance of open fiscal data.

Incorporating SDGs into Budget Planning

- Need for a mapping between SDGs and public spending.



- Challenging task: possible spillovers across development programmes and complex interdependencies between SDGs targets.

- Data-driven approach. Two steps:



- Predictive model for the SDGs indicators.



- Identify the most relevant expenditure categories.

Data Description



- Focus: Mexico



- 456 development indicators
- Period: 2008-2019

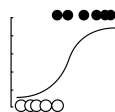


- 803 budget programmes
- Period: 2008-2019
- 41 macro-categories (*Ramos*)

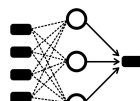
- We allow for all possible combinations of development indicators and budget programmes in every year, obtaining 1118073 unique observations.

Predicting Improvements in SDGs Indicators

- Classification task: we predict an improvement in the development indicators given their historical trends and changes in public expenditure.



- Logistic Regression
- Accuracy: 0.632
- AUC: 0.492



- Deep Neural Network
- Accuracy: 0.788
- AUC: 0.865



- Random Forest
- Accuracy: 0.925
- AUC: 0.979



Identify Top Expenditure Categories

- We rank *Ramos* in relative terms based on their Mean Decrease Impurity (i.e., Gini Importance).



- Finance and Public Credit
- Normalized Gini Importance: 1.000



- Environment and Natural Resources
- Normalized Gini Importance: 0.980



- Public Education:
- Normalized Gini Importance: 0.927



- Communications and Transports
- Normalized Gini Importance: 0.876

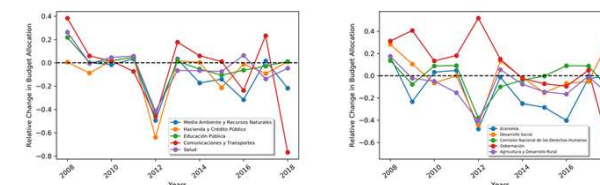


- Health
- Normalized Gini Importance: 0.824

Trends in Budget Allocation

- In recent years, systematic disinvestment in those expenditure categories that are the most relevant to improving SDGs indicators.

Fig. 1 : Relative Change in Budget Allocation for Top Expenditure Categories



Contacts

Daniele Guariso (corresponding author)

• D.Guariso@sussex.ac.uk

• dguariso@turing.ac.uk